

New Hampshire Department of Health and Human Services COVID-19

[Home](#)

[Resources & Guidance](#) Resources & Guidance

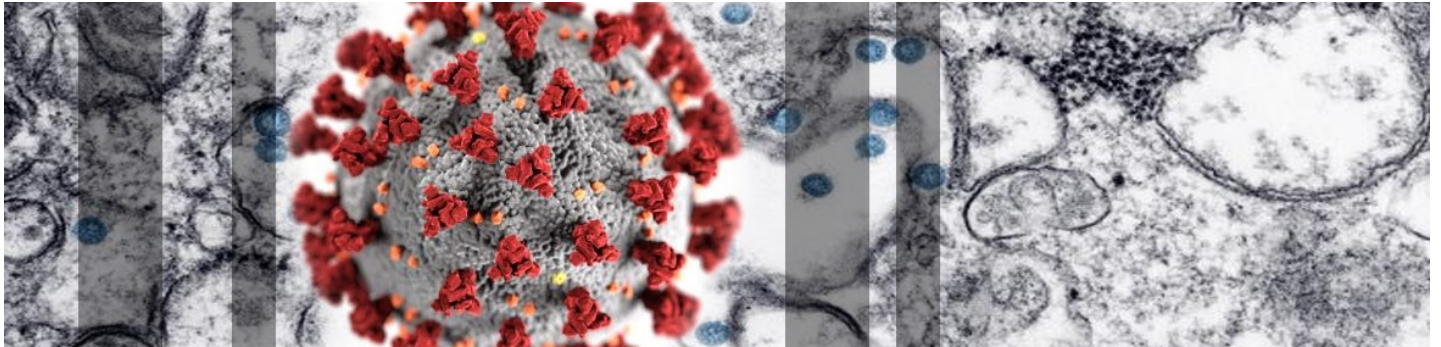
- [Residents](#)
- [Healthcare Providers](#)
- [Schools/Parents](#)
- [Businesses](#)
- [Other Guidance](#)
- [Volunteers](#)

[FAQs](#)

[News](#) News

- [Updates](#)
- [Press Releases](#)
- [Emergency Orders](#)

[DHHS Website](#)



searchable

Novel Coronavirus 2019 (COVID-19)

All Information on the Coronavirus COVID-19 in New Hampshire

Have questions about COVID-19?

Call 2-1-1

Phone dial: 1-866-444-4211

TTY: 603-634-3388

Federal/State Resources

- [DHHS Bureau of Infectious Disease Control](#)
- [CDC Situation Summary](#)
- [CDC 2019 Novel Coronavirus \(COVID-19\), Wuhan, China](#)
- [World Health Organization - Coronavirus](#)
- National Association of the Deaf: [A Message from the NAD About Coronavirus \(COVID-19\)](#)

Special Notice Regarding Potential COVID-19 Exposure on Concord Coach Lines

DHHS has issued guidance regarding potential community exposure of the coronavirus after DHHS determined that a person with COVID-19 was on the following Concord Coach Lines buses:

- 3/11/20: 3:15 AM bus from Concord, NH – Boston Express Londonderry – South Station – Boston Logan Airport
- 3/13/20: 5:40 PM bus from Logan – South Station – Concord – Tilton – Plymouth – Lincoln – Littleton
- 3/14/20: 5:00 AM bus from Concord – Boston Express Londonderry – Boston Express Salem – South Station – Logan
- 3/16/20: 1:40 PM bus from Logan – South Station – Concord

Any individuals who rode on one of the Concord Coach Line buses above may have been potentially exposed to the novel coronavirus and should stay at home and monitor their health for fever or respiratory illness. Any person who was on those buses and has developed symptoms should stay away from other people, and immediately contact their healthcare provider. [View the DHHS Guidance for Self-Quarantine...](#)

Current Situation

A novel coronavirus (COVID-19) has been identified as the cause of an outbreak of respiratory illness first detected in Wuhan City, Hubei Province, China, and which continues to expand. Cases have been identified in the United States, as well as many other countries. The Centers for Disease Control and Prevention (CDC) and State and local health departments, including the New Hampshire (NH) Department of Health and Human Services (DHHS), Division of Public Health Services' (DPHS), are monitoring this rapidly

developing situation. Information about this outbreak will be available here and continuously updated.

New Hampshire 2019 Novel Coronavirus (COVID-19) Summary Report

(updated March 25, 2020, 9:00 AM)

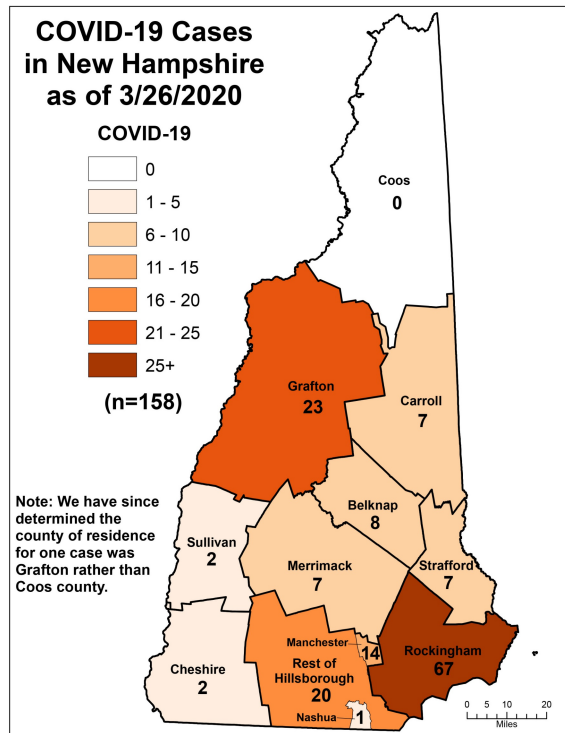
The update is dependent on the data not on the webpage update.

Number of Persons with COVID-19 ¹	137
Deaths Attributed to COVID-19	1 (<1%)
Hospitalizations	19 (14%)
Persons Tested Negative at Selected Laboratories ²	3,001
Persons with Specimens Submitted to NH PHL	2,620
Persons with Test Pending at NH PHL ³	712
Persons Being Monitored in NH (approximate point in time)	650

¹ Includes specimens presumptive-positive at any laboratory and those confirmed by CDC confirmatory testing.

² Includes specimens tested at the NH Public Health Laboratories (PHL), LabCorp, Quest, Dartmouth-Hitchcock Medical Center, and those sent to CDC prior to NH PHL testing capacity.


³ Includes specimens received and awaiting testing at NH PHL. Does not include tests pending at commercial laboratories.



- [Emergency Orders](#)
- [Explanation of Public Health Monitoring and Movement Restriction Terms](#) 
- [Emergency Responders Unprotected Exposure Guidance](#) 

Social Media

- [DHHS Facebook](#) 
- [DHHS Twitter](#) 
- [Public Health Facebook](#) 
- [Public Health Twitter](#) 

 Portable Document Format (.pdf). Visit nh.gov for a list of [free .pdf readers](#) for a variety of operating systems.

Select Language

Powered by [Google Translate](#)

New Hampshire Department of Health and Human Services
129 Pleasant Street | Concord, NH | 03301-3852

[NH.gov](#) | [privacy policy](#) | [accessibility policy](#) | [webmaster](#) | [DHHS Non-Discrimination Policy](#)
copyright . State of New Hampshire